

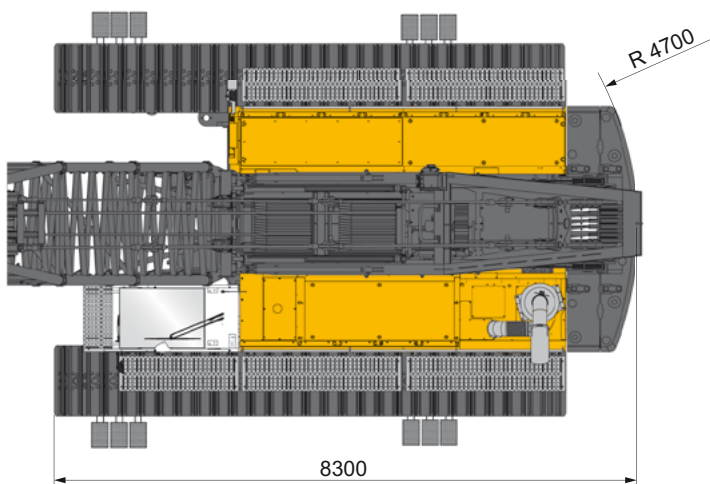
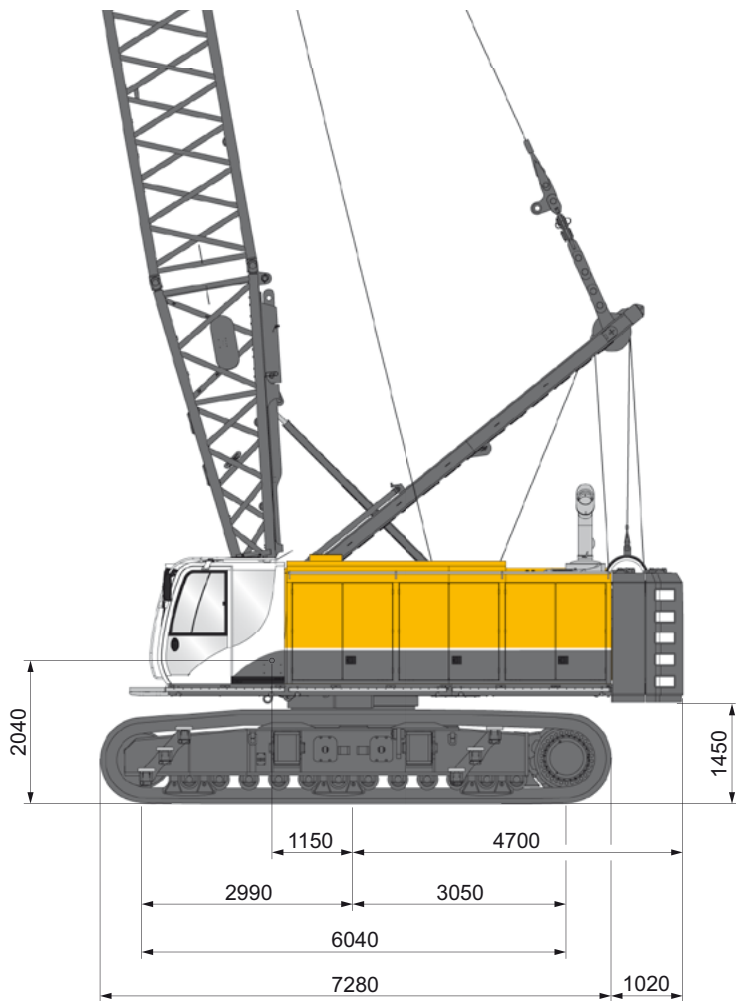
BAUER MC 96

Duty-Cycle Crane

MC Line



Dimensions of Base Machine



Operating Weight

with HD undercarriage, 1,000-mm-track shoes, upper carriage with 2 hoist winches and wire ropes, operating equipment, 30 t standard counterweight, 18.4 m basic boom including A-frame, boom hoist, roller block, hoist rope, boom bottom piece, 6 m boom insert, boom top, guy ropes and roller head, 130 t hook block

Total weight

approx. 123 t

Upper Carriage

Modular, torsion-resistant, precision welded construction, designed for high continuous load, pre-equipped for additional applications

- Variable counterweight concept, simple mounting/removal system for easy transport
- 4 headlights
- Walkways to the front and side of the cab
- Excellent accessibility of all major components for service procedures

Standard counterweight 3-part	2 x 12.5 + 5.0 t
Add-on counterweight 2-part	max. 6 x 2.5 t
Max. counterweight	45 t

Engine

CAT diesel engine	C 18	Twin-Turbo	Twin-Turbo	Turbo
Nominal output	kW	570	563/576	470
Operating speed	rpm	1,850	1,850	1,850

Exhaust emission standard

EPA/CARB	ORA*	-/Tier 4 final	Tier 4 final	
EU 2016/1628		St. V	St. V	
	China St. III		QPME ready	
Diesel tank volume	l	1,200	1,200	950

Hydraulic System

Modern, high-performance hydraulic system with energy-saving flow control on demand and power management system in multiple-circuit technology

Flow Rates

Main circuits for duty-cycle applications	2 x 430 l/min
Main winch circuits	2 x 550 l/min
Additional circuit	1 x 328 l/min
Swing-gear circuit	1 x 204 l/min
Hydraulic pressure	350 bar
Hydraulic tank capacity	1,000 l

- Closed circuits for the main winches
- Open hydraulic circuits for additional consumers (optional)
- Closed hydraulic system for slewing gear
- Additional gear pumps for cooling and control systems
- Electro-hydraulic pilot control
- Cleaning of the hydraulic oil by means of large-dimensioned return oil filters, leak oil filters and pressure filters in the pilot control system
- Cooling system with high power reserves for working under permanent load even when subjected to unfavorable climatic conditions

Load Hoist Assemblies

Low-maintenance, compact duty-cycle crane winches, powered by controlled hydraulic adjustable motors via integrated planetary gears. Freefall with oil-cooled multiple disk holding brake and clutch.

		Freefall Winch	
Main winch 1		300 kN	350 kN
Main winch 2		300 kN	350 kN
Rope capacity	Layer 1	38 m	39.3 m
	Layer 1 - 2	87 m	90 m
	Layer 1 - 3	139 m	144 m
	Layer 1 - 4	195 m	
Rope diameter		34 mm	36 mm
Drum diameter		760 mm	836 mm
Max. rope speed		103 m/min	74 m/min

Boom Hoist Assembly

Adjustment via winch	
Line pull of boom hoist winch	approx. 160 kN
Rope diameter	22 mm
Rope length	140 m

Swing Gear

- Slew ring driven by axial piston motor and planetary gear
- Slewing and dynamic braking in closed circuit for sensitive control
 - Rotational speed can be pre-selected in stages up to 3 rpm
 - Hydraulically activated multiple disk holding brake
 - Extra large slewing ring, externally toothed
 - Low-maintenance slew gear

Undercarriage

Rigid fully hydraulic crawler undercarriage with adjustable tracks

- 4 access ladders on the crawler, either mountable on the inside or on the outside

Type	UW 195 BC
2 travel gears, Max. travel speed	approx. 1.0 km/h
Track width	1,000 mm
Crawler type	B 9 S
Track width (retracted / extended)	2,980/4,310 mm
Crawler width (retracted / extended)	3,980/5,310 mm
Crawler length	7,280 mm
HD track guidances	6 pcs.

* Exhaust emission equivalent Tier 2

Control System

Programmable microprocessor control system with electro-proportional pre-control

- Clearly arranged control panel for rig functions, located to the right-hand side of the operator's seat
- Two joysticks at the operator seat for all functions or double-T stick for rope grab operation
- Two foot pedals for control of undercarriage
- Foot pedals for control of freefall brake, pre-selectable secured or unsecured mode

B-Tronic

The BAUER B-Tronic system allows completion of construction tasks in a reliable and accurate manner, even under extreme operating conditions

- The high-resolution touchscreen display ensures excellent user-friendliness
- The display can be optimally adapted to the operating situation and the amount of light present by changing the brightness level, the color scheme and the day/night mode
- The main parameters can be viewed at a glance
- Recording of all production data
- Easy trouble shooting for service operations

B-Drive

The B-Drive is a central operating and visualization system

- B-Drive combines adjustable potentiometer values on one display
- Ergonomic positioning of the display on the right column of the operator's cab

Boom

Robust tubular lattice boom with thick walled boom tubes, specifically designed for applications in specialist foundation engineering where high dynamic loads occur

- Basic boom consists of an A-frame, hoist winch, hoist rope, boom butt

- The boom is designed for use with Bauer hose drum systems
- Boom extensions and boom head according to the application

Operator's Cab

Comfort cab, FOPS certified

- Resiliently mounted, with exceptional sound suppression
- Excellent all-round visibility of the working area
- Sun blind
- Sliding door with sliding window
- Front windshield and side windows made of laminated safety glass
- Tinted skylight and side windows
- Wiper/washer system for front windshield and skylight
- Infinitely variable cab heating system
- Stone guard
- First aid box
- Radio with MP3, USB and Bluetooth hands-free speakerphone
- Camera system with on-screen display in the cab

Automatic air conditioning system

Fully-automatic controlled air conditioning system with comfortable control panel

- Selection manual/automatic mode
- Manual changing from degrees Celcius to Fahrenheit possible

Comfortable operator's seat

Mechanically sprung

- Weight and height adjustable
- Inclination adjustment
- Horizontally adjustable
- Headrest and adjustable armrests
- Document compartment



The EEP contains the following modifications:

- Variable and intelligent cooler and fan control
- Reduction in flow rate losses as a result of optimized hydraulic components
- Smart ECO mode of the diesel engine
- Closed hydraulic circuits for main winch operation

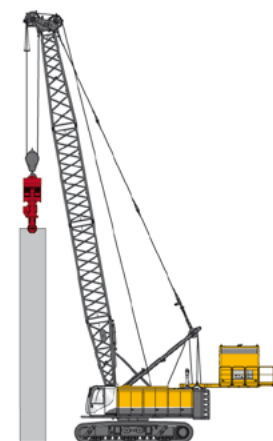
Optional Equipment

- Rope roller guide system for main winches
- Tensile load measurement via redundant load measuring sockets
- Winch synchronization for main winches
- Electronic load moment limitation for hoisting device operation, user interface integrated in B-Tronic
- Different roller heads for various applications
- Set of ropes for different applications
- Hydraulic and electronic equipment kits for various applications such as cutting systems, two-rope grabs, hanging leaders, hydraulic hammers, depth vibrators and rotary heads
- Quick connection system for the crawlers with hydraulic quick couplings, assembling tools and lifting gear
- Rope pull-in winch
- Hydraulic counterweight mover with hydraulic ballast lock
- Independent cab heater with timer
- Electric fuel pump for diesel tank
- Aircraft warning light
- Anemometer
- Bauer GCS (data acquisition system for hydraulic grabs)
- Central lubrication system
- Additional ballast for defined applications: Counterweight 10 t plus central ballast 8.5 t at undercarriage
- Adapter on undercarriage for casing oscillator
- Walkways on the upper carriage for various types of applications
- Access ladder to upper carriage
- Special coating available on customer request
- Sun protection systems for various types of applications
- Fly jib
- Working at height system for boom walkway (patented)
- On top hand rails - upper carriage
- On top hand rails - counterweight
- Swing angle indicator
- Swing angle limitation device
- Boom angle limitation device
- Rope fix point with overload protection (patented)
- Sound proof kit
- Arctic kit
- Additional air conditioning system
- Fire extinguishing system
- DTR module
- High-pressure cleaner
- Rear frame for additional power packs
- Auxiliary winch for grab operation
- Protective ventilation system

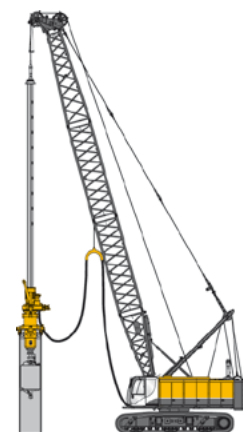
Applications

Base Machine

- for hydraulic diaphragm wall grab with hydraulic hose drum system and grab turning device
- for cased bored piles in combination with a grab and a casing oscillator
- for Bauer depth vibrator TR 75 with hydraulic power supplied via the on-board hydraulic system
- for various vibratory pile drivers with power pack at the rear (power pack optional)
- for Bauer cutters with various hose drum systems
- for Bauer Flydrill with hydraulic power supplied via the on-board hydraulic system



Vibratory pile driver with power pack



Flydrill

Applications

Duty-Cycle Crane Operation – Load Chart

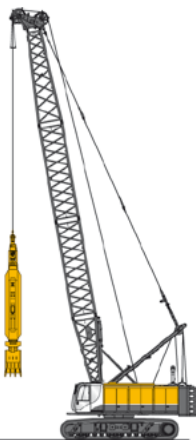
Boom lengths from 18.4 m to 36.4 m, 300 / 350 kN winches, loads in t

Operating radius r (m)	with 30 t counterweight						with 40 t counterweight						with 45 t counterweight								
	Boom length (m)																				
	18.4	21.4	24.4	27.4	30.4	33.4	36.4	18.4	21.4	24.4	27.4	30.4	33.4	36.4	18.4	21.4	24.4	27.4	30.4	33.4	36.4
6.0	53.0	53.0	53.0	53.0	53.0	53.0	53.0	53.0	53.0	53.0	53.0	53.0	53.0	53.0	53.0	53.0	53.0	53.0	53.0	53.0	53.0
7.0	53.0	53.0	53.0	53.0	53.0	53.0	53.0	53.0	53.0	53.0	51.8	53.0	53.0	50.7	53.0	53.0	49.3	53.0	53.0	53.0	53.0
8.0	45.6	53.0	44.8	53.0	43.9	52.2	53.0	42.9	51.2	53.0	41.9	50.2	53.0	40.8	49.1	53.0	39.6	47.9	51.7	51.7	51.7
9.0	38.3	45.4	37.5	44.6	36.7	43.8	47.3	35.8	42.9	46.4	34.8	41.9	45.5	33.9	41.0	44.5	32.8	39.9	43.4	43.4	43.4
10.0	32.8	39.0	32.1	38.3	31.3	37.5	40.6	30.5	36.7	39.8	29.6	35.8	38.9	28.7	34.9	38.0	27.7	33.9	37.0	37.0	37.0
11.0	28.6	34.1	27.9	33.4	27.2	32.7	35.4	26.4	31.9	34.6	25.6	31.1	33.8	24.8	30.2	33.0	23.8	29.3	32.1	32.1	32.1
12.0	25.2	30.2	24.6	29.5	23.9	28.8	31.3	23.2	28.1	30.6	22.4	27.3	29.8	21.6	26.5	29.0	20.8	25.7	28.1	28.1	28.1
13.0	22.5	27.0	21.9	26.4	21.3	25.7	27.9	20.6	25.0	27.3	19.8	24.3	26.5	19.1	23.5	25.7	18.2	22.7	24.9	24.9	24.9
14.0	20.3	24.3	19.7	23.8	19.1	23.1	25.2	18.4	22.5	24.5	17.7	21.8	23.8	16.9	21.0	23.1	16.2	20.2	22.3	22.3	22.3
15.0	18.4	22.1	17.8	21.6	17.2	21.0	22.8	16.6	20.3	22.2	15.9	19.6	21.5	15.2	18.9	20.8	14.4	18.2	20.0	20.0	20.0
16.0	16.8	20.2	16.2	19.7	15.6	19.1	20.9	15.0	18.5	20.2	14.3	17.8	19.6	13.6	17.1	18.9	12.9	16.4	18.1	18.1	18.1
17.0			14.8	18.1	14.3	17.5	19.1	13.6	16.9	18.5	13.0	16.2	17.9	12.3	15.6	17.2	11.6	14.9	16.5	16.5	16.5
18.0			13.6	16.7	13.1	16.1	17.6	12.5	15.5	17.0	11.8	14.9	16.4	11.2	14.2	15.8	10.5	13.5	15.1	15.1	15.1
19.0			12.6	15.4	12.0	14.9	16.3	11.4	14.3	15.7	10.8	13.7	15.1	10.2	13.0	14.5	9.5	12.4	13.8	13.8	13.8
20.0			11.6	14.3	11.1	13.8	15.2	10.5	13.2	14.6	9.9	12.6	14.0	9.3	12.0	13.3	8.6	11.3	12.7	12.7	12.7
21.0					10.3	12.8	14.1	9.7	12.3	13.5	9.1	11.7	13.0	8.5	11.1	12.3	7.9	10.4	11.7	11.7	11.7
22.0					9.6	12.0	13.2	9.0	11.4	12.6	8.4	10.8	12.0	7.8	10.2	11.4	7.2	9.6	10.8	10.8	10.8
23.0					8.9	11.2	12.4	8.3	10.6	11.8	7.8	10.1	11.2	7.2	9.5	10.6	6.5	8.9	10.0	10.0	10.0

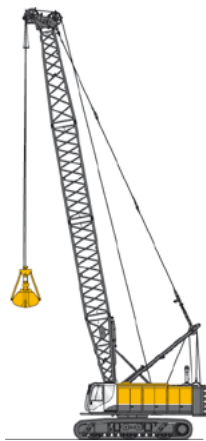
- Notes:**
- The specified loads are maximum values and must not be exceeded.
 - The rated loads are valid for a planar, firm plane.
 - The rated loads are valid for a 360° swing angle.
 - The rated loads are valid for maximum undercarriage track width.
 - The rated loads do not exceed 75 % of the tipping load.
 - The weights of lifting accessories and ropes are part of the permissible total load.
 - When lifting loads that exceed the maximum pulling force of a winch it must be ensured that no single winch is overloaded.
 - During operation with a mechanical two-rope grab, the maximum pulling force of a single winch – considering the rope layer – must not be exceeded.
 - The specified values are for information purposes only. The actual values can be found in the documentation supplied with the machine.

Duty-Cycle Crane Operation

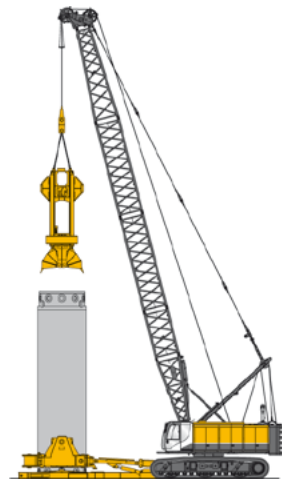
with mechanical two-rope grab



Diaphragm wall grab



Two-rope grab



Grab with casing oscillator

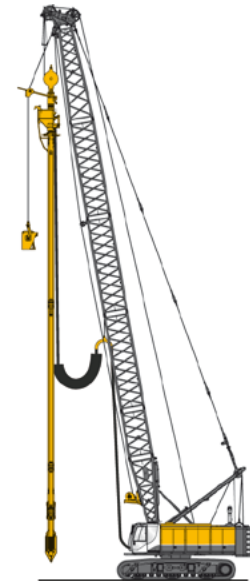
Flying Vibro

Main winch 350 kN single reeved (double-strand) over masthead

Boom length (m)	Penetration depth (m)	Weight Flying Vibro (t)	Radius (m)
24.4	15	15.6	8 - 12
30.4	20	17.8	8 - 11
33.4	25	19.9	8 - 10
39.4	30	22.2	8 - 9
45.4	35	24.4	8 - 8,5

Notes:

1. The rated loads are valid for a planar, firm plane.
2. The rated loads are valid for a 360° swing angle.
3. The rated loads are valid for maximum undercarriage track width.
4. When the Flying Vibro is not being used, it is to be placed on the ground.
5. The specified values are for information purposes only. The actual values can be found in the documentation supplied with the machine.



Flying Vibro

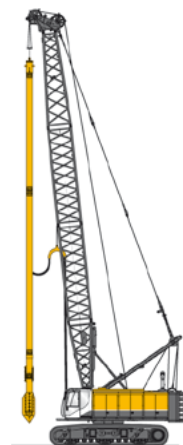
Equipment with Depth Vibrator TR 75 – RDV

30 t counterweight, main winch 350 kN single reeved (double strand) over masthead

Boom length (m)	Penetration depth (m)	Weight TR (t)	Radius (m)
21.4	15.2	7.3	8 - 12
24.4	18.7	8.1	8 - 12
27.4	21.7	8.9	8 - 12
30.4	24.7	9.6	8 - 12
33.4	27.2	10.7	8 - 12

Notes:

1. The rated loads are valid for a planar, firm plane.
2. The rated loads are valid for a 360° swing angle.
3. The rated loads are valid for maximum undercarriage track width.
4. When the depth vibrator is not being used, it is to be placed on the ground.
5. The specified values are for information purposes only. The actual values can be found in the documentation supplied with the machine.



Depth Vibrator TR

DHG Operation – Load Chart

Boom length 18.8 m, 300/350 kN winches, 30 t counterweight

Operating radius r (m)	Max. grab weight on HDSG (t)
4.5	35.0
5.0	35.0
6.0	35.0
7.0	33.8
8.0	29.0
9.0	25.2
10.0	22.2



Hydraulic Grab DHG with hose drum system HDSG 50 / HDSG 80

Notes:

1. The rated loads are valid for a planar, firm plane.
2. The rated loads are valid for a 360° swing angle.
3. The rated loads are valid for maximum undercarriage track width.
4. The rated loads do not exceed 75 % of the tipping load.
5. The weights of lifting accessories and ropes are part of the permissible total load.
6. Values designated with valid for grabs suspended via a rope sheave.
7. The specified values are for information purposes only. The actual values can be found in the documentation supplied with the machine.

Dynamic Compaction (BDC) – Load Chart

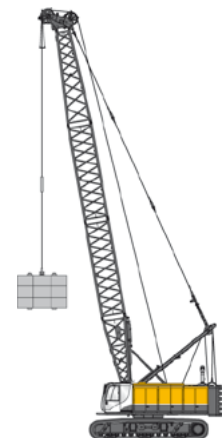
Boom lengths from 21.4 m to 42.4 m, 300 / 350 kN winches, loads in t

with 30 t counterweight

with 40 t counterweight

with 45 t counterweight

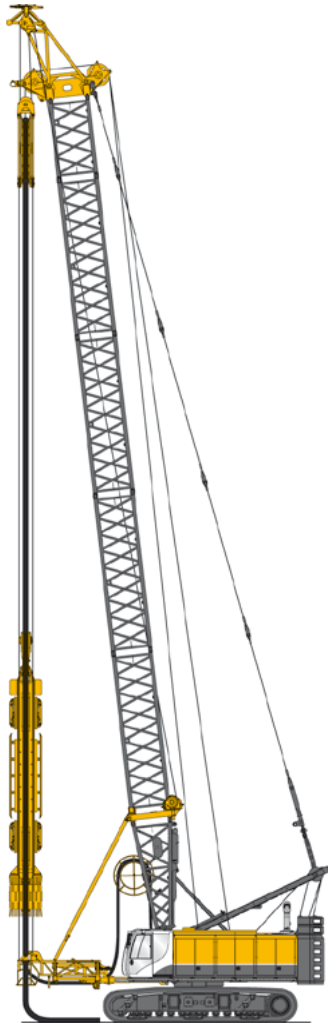
Operating radius r (m)	Boom length (m)																					
	21.4		24.4		27.4		30.4		33.4		36.4		39.4		42.4							
8.0	46.8	46.8	45.9	45.9	45.9	44.7	44.7	44.7	44.0	44.0	44.0	43.1	43.1	43.1	42.5	42.7	42.7	41.8	41.8	41.8	41.4	41.4
9.0	39.7	42.0	39.2	42.0	42.0	38.7	41.8	41.8	38.0	41.2	41.2	37.3	40.2	40.2	36.6	39.7	39.7	35.9	38.9	38.9	38.5	38.5
10.0	34.0	38.0	33.5	38.0	38.0	33.0	37.8	37.8	32.4	37.8	37.8	31.7	37.7	37.7	31.1	37.2	37.2	30.3	36.5	36.5	35.7	36.0
11.0	29.6	34.6	29.1	34.6	34.6	28.6	34.1	34.6	28.0	33.5	34.5	27.4	32.9	34.4	26.8	32.2	34.4	26.1	31.5	34.2	30.8	33.5
12.0	26.1	31.0	25.6	30.5	31.8	25.1	30.0	31.8	24.6	29.5	31.7	24.0	28.9	31.3	23.4	28.3	30.7	22.7	27.6	30.1	26.9	29.3
13.0	23.2	27.6	22.7	27.2	29.4	22.3	26.7	29.0	21.7	26.2	28.4	21.2	25.6	27.9	20.6	25.0	27.2	19.9	24.4	26.6	23.7	25.9
14.0	20.8	24.9	20.4	24.4	26.5	19.9	24.0	26.0	19.4	23.5	25.5	18.9	22.9	25.0	18.3	22.4	24.4	17.7	21.7	23.8	21.1	23.1
15.0	18.8	22.6	18.4	22.1	24.0	17.9	21.7	23.6	17.4	21.2	23.1	16.9	20.7	22.5	16.3	20.1	22.0	15.7	19.5	21.4	18.9	20.7
16.0	17.1	20.6	16.7	20.1	21.9	16.2	19.7	21.5	15.7	19.2	21.0	15.2	18.7	20.5	14.7	18.2	19.9	14.1	17.6	19.3	17.0	18.7



Dynamic Compaction (BDC)

Notes:

1. The rated loads are valid for a planar, firm plane.
2. The rated loads are valid for a 360° swing angle.
3. The rated loads are valid for maximum undercarriage track width.
4. The rated loads do not exceed 75 % of the tipping load.
5. The weights of lifting accessories and ropes are part of the permissible total load.
6. The specified values are for information purposes only. The actual values can be found in the documentation supplied with the machine.



Hose Tensioning System HTS, turnable

HTS 46/36/90°

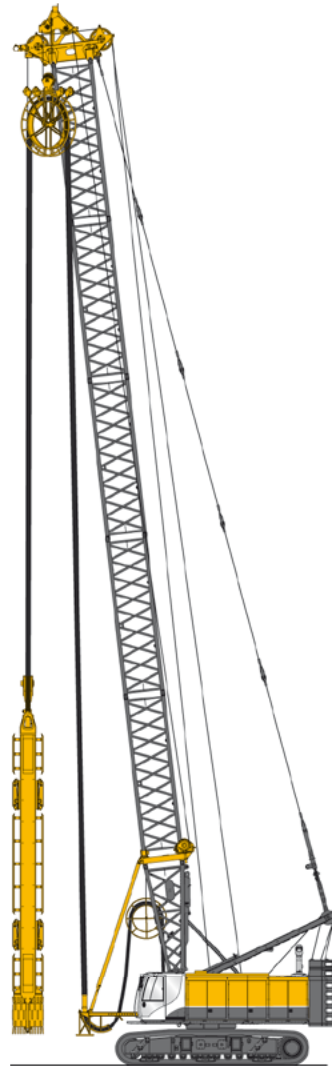
Max. cutting depth, unturned	46 m
Turned	36 m
Max. load	45 t

HTS 58/48/90°

Max. cutting depth, unturned	58 m
Turned	48 m
Max. load	41 t

HTS 70/60/90°

Max. cutting depth, unturned	70 m
Turned	60 m
Max. load	34.5 t



Hose Tensioning System HTS

HTS 60

Max. cutting depth	60 m
Max. load	40 t

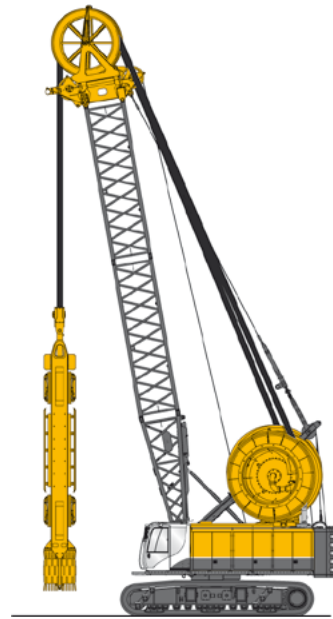
Equipment with Trench Cutter BC



Hose Drum System HDS, turnable

HDS 120 T

Max. cutting depth	120 m
Max. load	56 t



Hose Drum System HDS

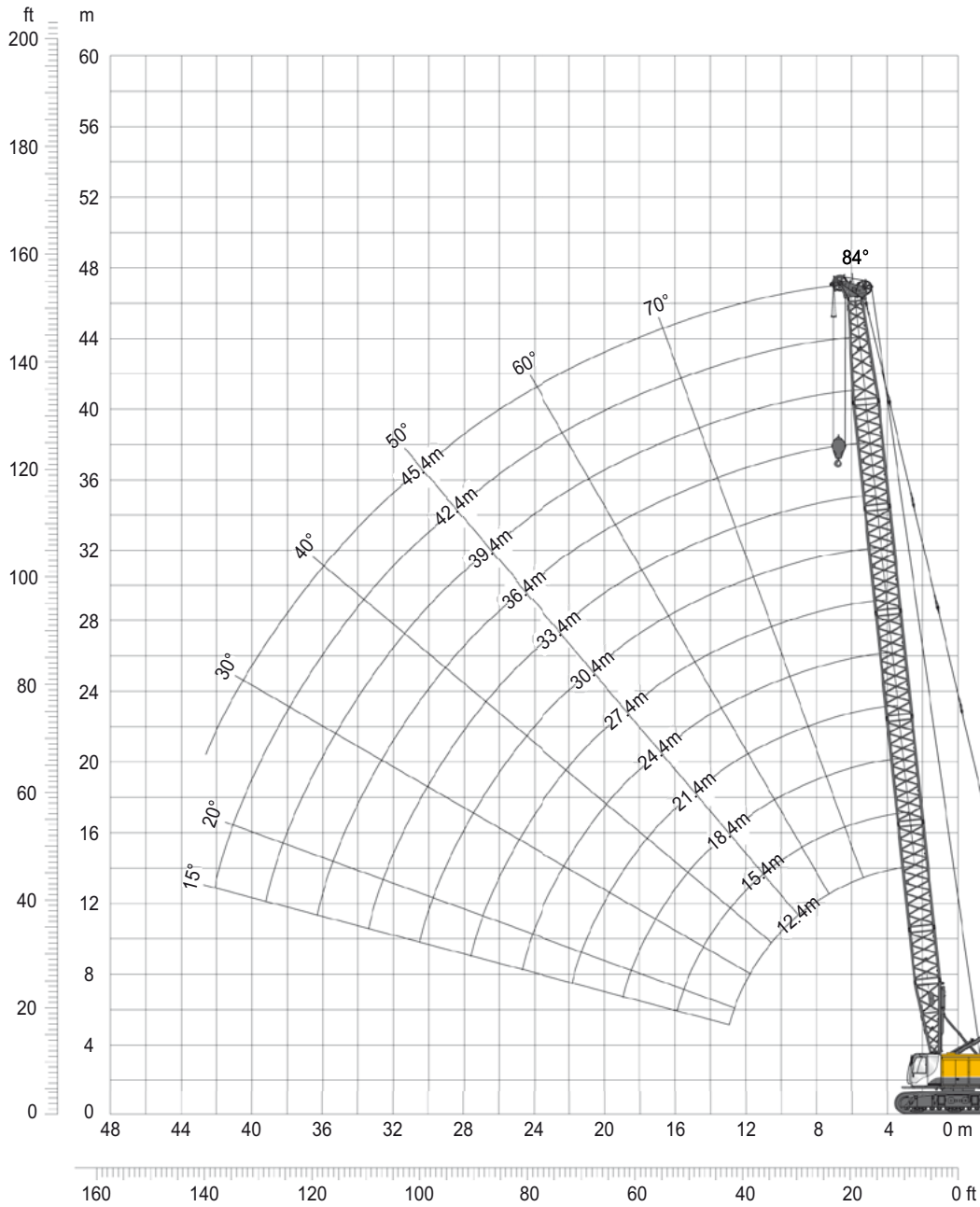
HDS 120

Max. cutting depth	120 m
Max. load	56 t

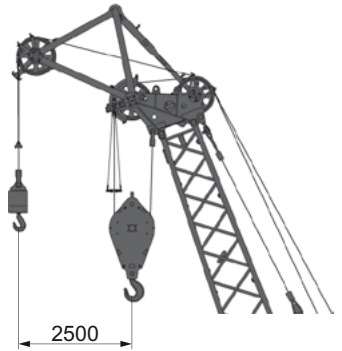
Notes - trench cutter applications:

1. The rated loads are valid for planar, firm plane.
2. The rated loads are valid for a 360° swing angle.
3. The rated loads are valid for maximum undercarriage track width.
4. The rated loads do not exceed 75° of the tipping load.
5. A wind speed of 20 m/s is taken into account.
6. A rotation moment (speed of upper carriage 1 rpm) is taken into account.
7. When the machine is not in operation it must stand on a planar, firm ground and the cutter must be placed on the ground.
8. The total weight of the cutter includes the cutter itself, the guide frame and the pulley block.
9. The specified values are for information purposes only. The actual values can be found in the documentation supplied with the machine.

Lifting Operation



Auxiliary Jib



The optional auxiliary jib is designed for single strand operation up to max. 35 t. Conditions for lifting operations apply for rated loads.

Boom Configurations

	Length (m)	Boom total length (m)									
		18.4	21.4	24.4	27.4	30.4	33.4	36.4	39.4	42.4	45.4
Boom butt	5.6	1	1	1	1	1	1	1	1	1	1
Boom section	3.0		1		1		1		1		1
Boom section	6.0	1	1	2	2	3	3	4	4	5	5
Boom top	5.9	1	1	1	1	1	1	1	1	1	1
Roller head	0.9	1	1	1	1	1	1	1	1	1	1

Lifting Operation – Load Chart

30 t counterweight, boom lengths from 18.4 m to 39.4 m, 300 / 350 kN winches, loads in t

Operating radius r (m)	Boom length (m)							
	18.4	21.4	24.4	27.4	30.4	33.4	36.4	39.4
3.6	122.0							
3.9		109.5						
4.0	113.6	108.2						
4.2			95.2					
4.5				83.3				
4.8					73.8			
5.0	87.0	82.4	78.1	74.1	70.5	65.8		
5.1								
5.4							59.2	
5.7								53.5
6.0	69.2	66.0	63.0	60.2	57.6	55.0	52.6	50.3
7.0	57.2	54.8	52.5	50.3	48.3	46.3	44.4	42.6
8.0	48.5	46.6	44.8	43.0	41.4	39.7	38.2	36.6
9.0	40.9	40.3	38.9	37.4	36.0	34.5	33.3	31.9
10.0	34.9	34.7	34.2	32.8	31.7	30.4	29.3	28.0
11.0	30.3	30.1	29.9	29.2	28.1	27.0	26.0	24.9
12.0	26.6	26.4	26.2	25.9	25.2	24.1	23.2	22.2
13.0	23.6	23.4	23.2	22.9	22.6	21.7	20.8	19.9
14.0	21.1	20.9	20.7	20.4	20.1	19.6	18.8	17.9
15.0	19.0	18.8	18.6	18.2	18.0	17.6	17.0	16.2
16.0	17.2	17.0	16.8	16.4	16.2	15.8	15.5	14.7
17.0	15.6	15.4	15.2	14.9	14.6	14.2	13.9	13.3
18.0	14.2	14.0	13.8	13.5	13.2	12.8	12.5	12.1
19.0	12.9	12.8	12.6	12.3	12.0	11.6	11.3	10.9
20.0		11.7	11.5	11.2	10.9	10.5	10.2	9.8
21.0		10.7	10.6	10.2	10.0	9.6	9.3	8.8
22.0		9.8	9.7	9.3	9.1	8.7	8.4	7.9
23.0			8.9	8.6	8.3	7.9	7.6	7.2
24.0			8.1	7.8	7.6	7.2	6.9	6.4
25.0				7.2	6.9	6.5	6.2	5.8
26.0				6.5	6.3	5.9	5.6	5.2
27.0				6.0	5.8	5.4	5.1	4.6
28.0					5.2	4.8	4.6	4.1
29.0					4.8	4.4	4.1	3.6
30.0					4.3	3.9	3.6	3.2
31.0						3.5	3.2	2.8
32.0						3.1	2.8	2.4
33.0						2.7	2.5	2.0
34.0							2.1	1.7
35.0							1.8	1.4
36.0							1.5	

Notes:

1. The rated loads are determined acc. to EN 13000.
2. The rated loads are valid for a planar, firm plane.
3. The rated loads are valid for a 360° swing angle.
4. The rated loads are valid for maximum undercarriage track width.
5. Steel structures are designed acc. to EN 13001.
6. The weights of lifting accessories and ropes are part of the permissible total load.
7. When travelling with a load, the rated load must be reduced.
8. The specified values are for information purposes only. The actual values can be found in the documentation supplied with the machine.

Lifting Operation – Load Chart

40 t counterweight, boom lengths from 18.4 m to 42.4 m, 300 / 350 kN winches, loads in t

Operating radius r (m)	Boom length (m)								
	18.4	21.4	24.4	27.4	30.4	33.4	36.4	39.4	42.4
3.6	130.0								
3.9		115.4							
4.0	122.1	114.1							
4.2			104.3						
4.5				94.5					
4.8					86.1				
5.0	96.0	94.1	91.2	86.8	82.6	77.3			
5.1									
5.4							69.7		
5.7								63.1	
5.9									57.6
6.0									
7.0	67.1	64.3	61.8	59.3	57.0	54.7	52.6	50.5	48.6
8.0	57.0	54.8	52.8	50.8	49.0	47.1	45.4	43.6	42.0
9.0	48.4	47.6	46.0	44.3	42.8	41.2	39.7	38.2	36.8
10.0	41.5	41.3	40.5	39.1	37.8	36.4	35.1	33.8	32.6
11.0	36.1	35.9	35.7	34.8	33.7	32.4	31.3	30.1	29.0
12.0	31.8	31.6	31.4	31.1	30.3	29.1	28.1	27.0	26.0
13.0	28.3	28.1	27.9	27.6	27.3	26.3	25.4	24.4	23.5
14.0	25.4	25.2	25.0	24.7	24.4	23.9	23.1	22.1	21.3
15.0	23.0	22.7	22.6	22.2	21.9	21.6	21.0	20.1	19.3
16.0	20.9	20.6	20.5	20.1	19.8	19.4	19.2	18.3	17.6
17.0	19.0	18.8	18.6	18.3	18.0	17.6	17.3	16.8	16.1
18.0	17.4	17.2	17.0	16.7	16.4	16.0	15.7	15.3	14.7
19.0	15.9	15.8	15.6	15.3	15.0	14.6	14.3	13.9	13.5
20.0		14.5	14.4	14.0	13.8	13.4	13.1	12.6	12.3
21.0		13.4	13.3	12.9	12.7	12.2	12.0	11.5	11.2
22.0		12.3	12.2	11.9	11.7	11.2	10.9	10.5	10.2
23.0			11.3	11.0	10.7	10.3	10.0	9.6	9.3
24.0			10.5	10.2	9.9	9.5	9.2	8.8	8.4
25.0				9.4	9.2	8.7	8.4	8.0	7.7
26.0				8.7	8.5	8.0	7.8	7.3	7.0
27.0				8.0	7.8	7.4	7.1	6.7	6.3
28.0					7.2	6.8	6.5	6.1	5.8
29.0					6.6	6.3	6.0	5.5	5.2
30.0					6.1	5.7	5.5	5.0	4.7
31.0						5.3	5.0	4.5	4.2
32.0						4.8	4.5	4.1	3.8
33.0						4.4	4.1	3.7	3.4
34.0							3.7	3.3	3.0
35.0							3.3	2.9	2.6
36.0							3.0	2.6	2.3
37.0								2.2	1.9
38.0								1.9	1.6
39.0								1.6	1.3

Notes:

- The rated loads are determined acc. to EN 13000.
- The rated loads are valid for a planar, firm plane.
- The rated loads are valid for a 360° swing angle.
- The rated loads are valid for maximum undercarriage track width.
- Steel structures are designed acc. to EN 13001.
- The weights of lifting accessories and ropes are part of the permissible total load.
- When travelling with a load, the rated load must be reduced.
- The specified values are for information purposes only. The actual values can be found in the documentation supplied with the machine.

Lifting Operation – Load Chart

45 t counterweight, boom lengths from 24.4 m to 45.4 m, 300 / 350 kN winches, loads in t

Operating radius r (m)	Boom length (m)							
	24.4	27.4	30.4	33.4	36.4	39.4	42.4	45.4
4.2	107.3							
4.5		97.1						
4.8			88.6					
5.0	93.7	90.1	86.1	80.1				
5.1								
5.4					73.2			
5.7						67.4		
5.9							61.9	
6.0	78.1	75.9	72.7	69.6	66.8	64.0	61.4	
6.2								56.7
7.0	66.4	63.7	61.3	58.9	56.7	54.5	52.4	50.4
8.0	56.8	54.7	52.8	50.8	49.0	47.1	45.5	43.7
9.0	49.5	47.7	46.1	44.4	42.9	41.3	39.9	38.4
10.0	43.7	42.2	40.8	39.3	38.0	36.6	35.4	34.0
11.0	38.6	37.6	36.4	35.1	34.0	32.7	31.6	30.4
12.0	34.0	33.7	32.8	31.6	30.6	29.4	28.4	27.3
13.0	30.3	29.9	29.7	28.6	27.7	26.6	25.7	24.6
14.0	27.1	26.8	26.6	26.0	25.2	24.2	23.3	22.3
15.0	24.5	24.2	23.9	23.5	23.0	22.0	21.2	20.3
16.0	22.3	21.9	21.7	21.3	21.0	20.2	19.4	18.5
17.0	20.3	20.0	19.7	19.3	19.0	18.5	17.8	16.9
18.0	18.6	18.3	18.0	17.6	17.3	16.9	16.4	15.5
19.0	17.1	16.8	16.5	16.1	15.8	15.4	15.0	14.2
20.0	15.8	15.5	15.2	14.8	14.5	14.1	13.7	13.1
21.0	14.6	14.3	14.0	13.6	13.3	12.9	12.5	12.0
22.0	13.5	13.2	12.9	12.5	12.2	11.8	11.5	11.0
23.0	12.5	12.2	12.0	11.5	11.2	10.8	10.5	10.0
24.0	11.6	11.3	11.1	10.7	10.4	9.9	9.6	9.1
25.0		10.5	10.3	9.9	9.6	9.1	8.8	8.3
26.0		9.7	9.5	9.1	8.8	8.4	8.0	7.6
27.0		9.0	8.8	8.4	8.1	7.7	7.4	6.9
28.0			8.2	7.8	7.5	7.1	6.7	6.3
29.0			7.6	7.2	6.9	6.5	6.2	5.7
30.0			7.0	6.6	6.4	5.9	5.6	5.1
31.0				6.1	5.9	5.4	5.1	4.6
32.0				5.6	5.4	4.9	4.6	4.2
33.0				5.2	4.9	4.5	4.2	3.7
34.0					4.5	4.1	3.8	3.3
35.0					4.1	3.7	3.4	2.9
36.0					3.7	3.3	3.0	2.5
37.0						2.9	2.6	2.2
38.0						2.6	2.3	1.9
39.0						2.3	2.0	1.5
40.0							1.7	1.2

Notes:

1. The rated loads are determined acc. to EN 13000.
2. The rated loads are valid for a planar, firm plane.
3. The rated loads are valid for a 360° swing angle.
4. The rated loads are valid for maximum undercarriage track width.
5. Steel structures are designed acc. to EN 13001.
6. The weights of lifting accessories and ropes are part of the permissible total load.
7. When travelling with a load, the rated load must be reduced.
8. The specified values are for information purposes only. The actual values can be found in the documentation supplied with the machine.

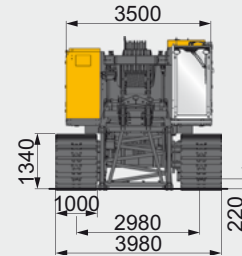
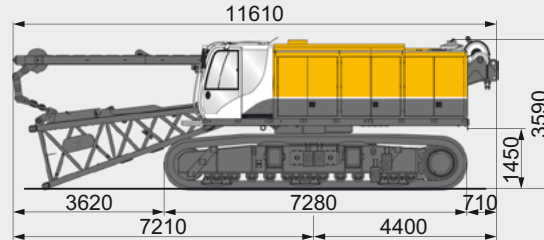
Transport – Dimensions and Weights

G = Weight
B = Width

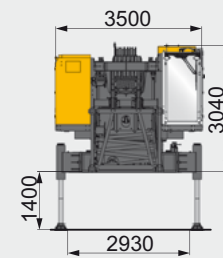
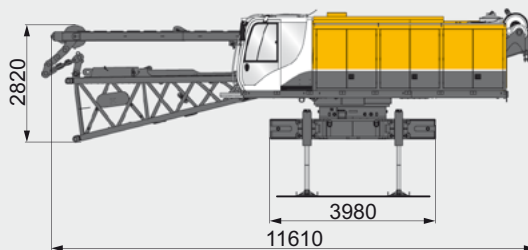
Weight data are approximate, optional equipment may change the overall weight and dimensions.

Base Machine

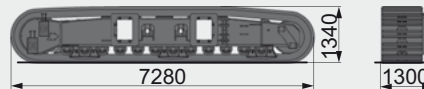
G = 84.3 t with UW 195 BC



G = 51.0 t with Jack-up system (optional)



Crawlers UW 195 BC
G = 2 x 17.1 t

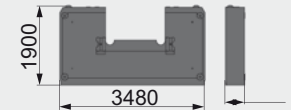


Counterweights

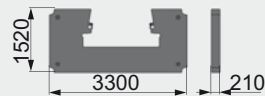
Standard counterweight 1
G = 12.5 t



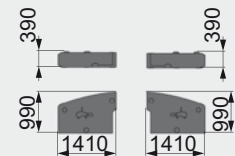
Standard counterweight 2
G = 12.5 t



Additional counterweight
G = 5 t

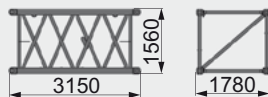


Add-on Counterweight
G = 2 x 2.5 t

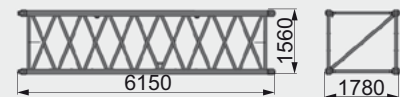


Boom Components

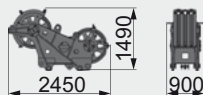
Boom section 3 m
G = 1.3 t



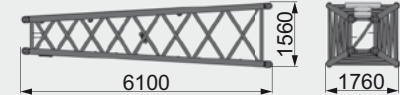
Boom section 6 m
G = 2.3 t



Roller head
G = 2 t



Boom top
G = 1.7 t



International Service Hotline

+800 1000 1200*

+49 8252 97-2888

BMA-Service@bauer.de

*toll-free number, where available

24/7



MC Line



BAUER Maschinen GmbH
BAUER-Strasse 1
86529 Schrobenhausen
Germany
Phone: +49 8252 97-0
bma@bauer.de
www.bauer.de

Design developments and process improvements may require the specification and materials to be updated and changed without prior notice or liability. Illustrations may include optional equipment and not show all possible configurations. These and the technical data are provided as indicative information only, with any errors and misprints reserved.